

## SEVIS Summary Statistics\*

DHS Certified Schools ----- 8,811

DoS Designated Sponsors ----- 1,444

Active Participants

Active Students (F & M) ----- 642,542

Active Exchange Visitors (J) ----- 170,588

Active Dependents (F, M & J) --- 122,091

Total ----- 935,221

\* Numbers fluctuate constantly as the status of individual participants change.

## SEVIS Summary Statistics

### Active Students (F, M) by Level of Education

Education Level	Count	Percent of Total
BACHELORS	183,740	30.0%
MASTERS	139,651	22.8%
DOCTORATE	110,507	18.3%
ASSOCIATE	66,138	10.8%
LANGUAGE TRAINING	60,676	9.9%
OTHER	23,608	3.9%
SECONDARY	19,530	3.2%
PRIMARY	3,224	0.5%
OTHER VOCATIONAL SCHOOL	3,053	0.6%
FLIGHT TRAINING	1,554	0.3%

### Top 10 Courses of Study by Number of Active Students (F, M)

Rank	Course of Study	Count	Percent of Total
1	BUSINESS, MANAGEMENT, MARKETING, AND RELATED SUPPORT SERVICES	118,950	19.4%
2	ENGINEERING	78,562	12.8%
3	BASIC SKILLS	49,061	8.0%
4	COMPUTER AND INFORMATION SCIENCES AND SUPPORT SERVICES	40,762	6.7%
5	HEALTH PROFESSIONS AND RELATED CLINICAL SCIENCES	32,329	5.3%
6	LIBERAL ARTS AND SCIENCES, GENERAL STUDIES, AND HUMANITIES	31,528	5.2%
7	VISUAL AND PERFORMING ARTS	30,504	5.0%
8	BIOLOGICAL AND BIOMEDICAL SCIENCES	27,589	4.5%
9	SOCIAL SCIENCES	26,573	4.2%
10	EDUCATION	20,781	3.4%

## SEVP Approved Schools

School Type	Percentage
HIGHER EDUCATION	27%
PRIVATE ELEMENTARY	11%
PRIVATE MIDDLE	13%
PRIVATE HIGH (grades 9-12)	16%
PUBLIC HIGH (grades 9-12)	5%
VOCATIONAL/TECHNICAL	11%
FLIGHT TRAINING	2%
LANGUAGE TRAINING	9%
OTHER	6%

## Bookmark: WWW.ICE.GOV/SEVIS

From: sysadmin.sevis@usdoj.gov [mailto:sysadmin.sevis@usdoj.gov]  
 Sent: Tuesday, May 02, 2006 2:22 PM  
 To: sevpinfo@eds.com  
 Subject: SEVIS NOTICE [SEVP Website Address Change](#)  
 PLEASE DO NOT RESPOND TO THIS MESSAGE  
 SEVIS NOTICE - May 2, 2006  
 Attn: Student and Exchange Visitor Information System Users:

On April 14, 2006, the SEVP website moved to <http://www.ice.gov/sevis>. Please change your bookmarks to reflect the new address. Notice the new "International Students" button at the top of the ICE website. The SEVP website features a comprehensive new look. New content has been provided for schools looking for information about the certification process and for organizations that would like to request SEVP attendance at their meetings. Access to frequently requested materials such as the Approved Schools list and the DSO Online Training remain on the Schools and Programs Page, but are easier to find.

If you have any questions or comments, please contact SEVP by emailing [SEVIS.Source@dhs.gov](mailto:SEVIS.Source@dhs.gov).

Thank you,

Student and Exchange Visitor Program

## Frequently Asked Questions

### • Posted Frequently Asked Questions

- SEVIS I-901 Fee
- Travel
- I-17: School Certification
- Employment: on and off campus
- Hurricane Katrina/Rita and Emergency Evacuation
- Transfers
- Employment: OPT and CPT and International Intern
- Information for Employers
- Social Security and Tax Information
- Improving Data Integrity
- Data Validation



## Training

- Web Based Training Module for School Officials. As of January 10, 2007
  - Number of DSOs signed up for training = 3,255
  - Number of DSOs completed training = 1,588
- Frequently Asked Questions and Training Slides on SEVP website
- Training for DHS officers and ICE agents



## Outreach Efforts

Our standard method of keeping in touch is through our Web site - [www.ice.gov/sevis](http://www.ice.gov/sevis)

For the month of November:

- Total number of Unique Visitors: 80,303
- Visitors Who Visited Once: 67,435
- Visitors Who Visited More Than Once: 12,868



## Lessons Learned: Hurricane Katrina

- Does your school have a Continuity of Operations(COOP) plan?
- Did you have a seat at the table when it was developed?
  - Were the special needs of international students considered in its development?
  - Could you contact your international students right now if there was an emergency?



## Lessons Learned

- Develop a Plan
- Communication is critical
- Backup is essential



## Lessons Learned: Egyptian 11

- SEVIS works well. We knew these students were coming; we knew when they did not arrive, and we knew we had to find them.
- Develop and maintain relationships, particularly with local Special Agent in Charge (SAC)
- Do not rely upon system terminations



## SEVIS Validation Studies

- Conducted three successive exercises
- Looked at two things:
  - Measure SEVIS data integrity of critical elements
  - How schools verify actual student presence
- Publish results and any lessons learned on our Web site.



## Lessons Learned

- Communication is critical. Verify your School and DSO contact information concurrent with student registration. Make sure your email address is correctly entered: no spaces, no omissions.
- Do we have your correct phone number?
- Do not use a SPAM filter for SEVP addresses



## SEVIS Next Generation Feasibility Study

### Purpose:

To determine whether or not SEVIS is keeping up with the demands of its users through various upgrades, or whether it is time to consider development of a SEVIS Next Generation.



## SEVIS Next Generation Feasibility Study

### Feasibility Study

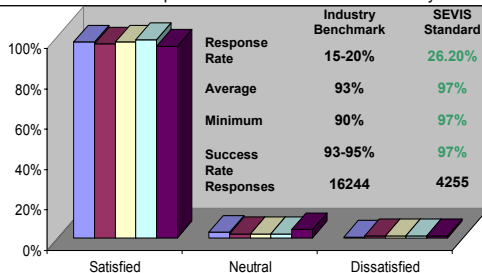
- Interviewed local schools to gain feedback
- What would you like to have?
  - Better search and reporting capabilities
  - Increase the number of DSOs and provide different levels of access
  - Ability to view historical data
  - Ability to view OPT data
  - Better interfaces with other DHS systems
  - P/DSO Contact Information

**A Big Thank You to local participants for their outstanding participation in the SEVIS Next Generation Feasibility Study!**



## Special Thanks!

Thank you for your participation in the SEVIS Help Desk Customer Satisfaction Survey.



## Communication and Contact Information

*The Student and Exchange Visitor Program office believes communication is important and we invite you to use any of the following methods to contact us with your questions and/or comments –*

- All general and policy inquiries: [SEVIS.Source@dhs.gov](mailto:SEVIS.Source@dhs.gov)
- General telephone number: 202/305-2346
- Technical questions: Call the SEVIS HelpDesk at 800/892-4829 between 8 AM and 8 PM, EST or email [SEVIShelpdesk@eds.com](mailto:SEVIShelpdesk@eds.com)
- Urgent, technical issues: [Toolbox.SEVIS@dhs.gov](mailto:Toolbox.SEVIS@dhs.gov)
- I-901 questions: Check the web or email SEVP at [fmjfee.SEVIS@dhs.gov](mailto:fmjfee.SEVIS@dhs.gov) or call the hotline at 785/330-1048 (Country code 1)
- School Certification questions: email [schoolcert.SEVIS@dhs.gov](mailto:schoolcert.SEVIS@dhs.gov) or call 202/305-2346 or FAX at 202/353-3723



# Thank You

**For the continued opportunity to work together to achieve the mission of Homeland Security**



## Back-up Slides

Transfer policy, etc.

## Recertification Notification

- SCB has received many calls from school officials who believe they have received a recertification notice when they login to SEVIS
- We added a **key** for the symbol (@) in SEVIS Release 4.14 (Dec 2004)
- That symbol will appear to the right of the name of your school when it is your time to begin the recertification process

Name of School	Name of Campus	Location (City, State)	Role	Commands
Akhida University	Akhida University	Washington, DC	DSO	Search Has Student Student Lists Reports
Woodland University	Woodland University	Washington, DC	DSO	Search Has Student @ alerts Student Lists Reports



## I-515A PROCESSING

### WHAT IS AN I-515A?

- A deferred inspection form given to students/exchange visitors upon entry to the U.S., who are not in possession of required documents according to the SEVIS regulations.
- A tracking mechanism used by the DHS for purpose of identifying students/exchange visitors that are not in compliance with SEVIS regulations, giving them 30 days to correct their status.
- Vehicle used to keep DSO's and RO's aware of the entry and exit of students/exchange visitors.



## I-515A PROCESSING Cont'd

If issued an I-515A

- Read the marked section identified by the CBP officer upon admittance to the U.S.
- Submit **ORIGINAL** documents listed under the section identified by the CBP officer.
- **PLEASE DO NOT SEND PASSPORTS!!!!**
- Mail all documents to the following address:  
**SEVIS – I-515A Processing Team**  
425 I Street Suite 6034  
Washington, D.C. 20536



## Transfer Policy

- [8 CFR 214.2\(f\)\(8\)](#) governs school transfers
- The transfer process is a way to electronically transfer SEVIS records and retain the same SEVIS identification number for the student
- SEVIS records are government property. Schools cannot refuse to transfer the SEVIS record



## For Initial Students

### Can newly arrived students transfer?

Newly arrived students can transfer if they first [report](#) to your school and have been accepted by another DHS-certified school. The student must be able to attend classes at the transfer-in school the next available semester or within 5 months, whichever is sooner.

There is no regulatory requirement that the student attend a full term before applying for a transfer. You will need to register the student in SEVIS.

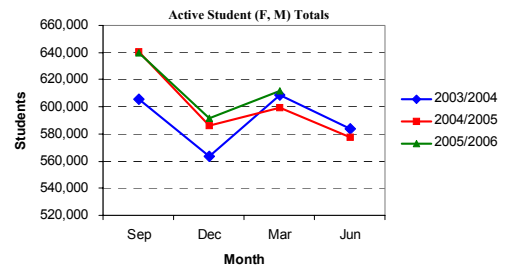
## For Terminated Students

- The student has two choices as defined in 8 CFR 214.2(f)(8):
  - Apply for reinstatement prior to transferring
  - Obtain an initial Form I-20 from the new school, exit the US and re-enter

## Reporting vs. Enrolling

- Term or session reporting:
  - Student must report by program start (initial) or next session start (continuing) date
  - School must update SEVIS record within 30 days of program start or next session start date
  - Update** verifies that the student reported, **answers security concerns**
- Enrollment in full-course of study
  - Reported "by exception" (i.e., when a DSO is informed of or approves a student drop-below full-time study)
  - School must update SEVIS record within 21 days of occurrence

## SEVIS Summary Statistics



## SEVIS Summary Statistics

Top 10 Countries of Citizenship by Number of Active Students (F, M)

Rank	Country of Citizenship	Count	Percent of Total
1	SOUTH KOREA	87,416	14.3%
2	INDIA	68,263	11.2%
3	CHINA	54,120	8.8%
4	JAPAN	48,719	8.0%
5	TAIWAN	32,503	5.3%
6	CANADA	29,898	4.9%
7	MEXICO	14,036	2.3%
8	TURKEY	11,948	2.0%
9	THAILAND	10,839	1.8%
10	BRAZIL	8,493	1.4%

25.5%

## SEVIS Summary Statistics

Active Students (F, M) by State

